

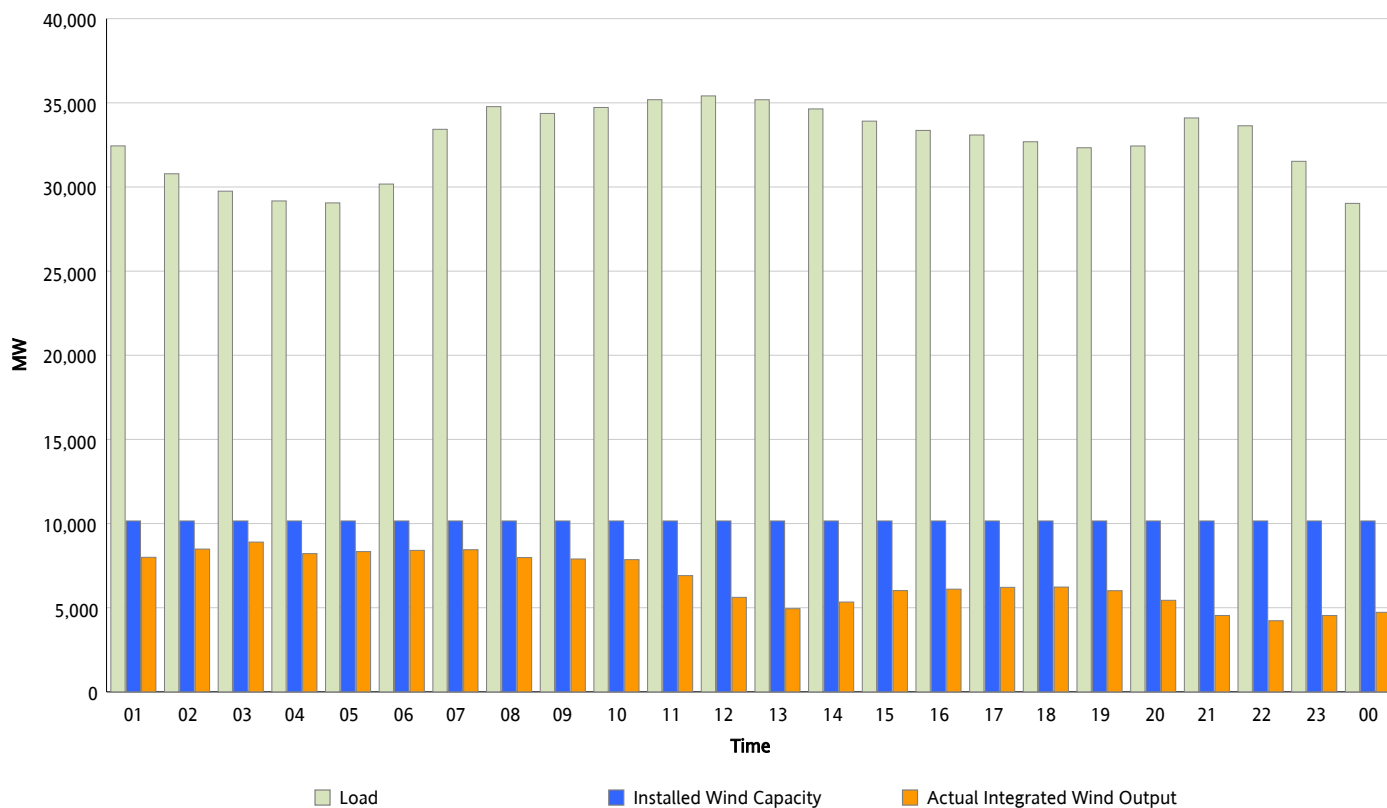


ERCOT Grid Operations

Wind Integration Report : 04/18/2013

Peak Load	35,413 MW
Load Peak Hour (HE)	12
Wind Over Peak	5,616 MW
Wind Record 02/09/13	9,481 MW
Max Wind Value*	9,094 MW
Wind Peak Time	02:05
Wind Integration %	30.19 %

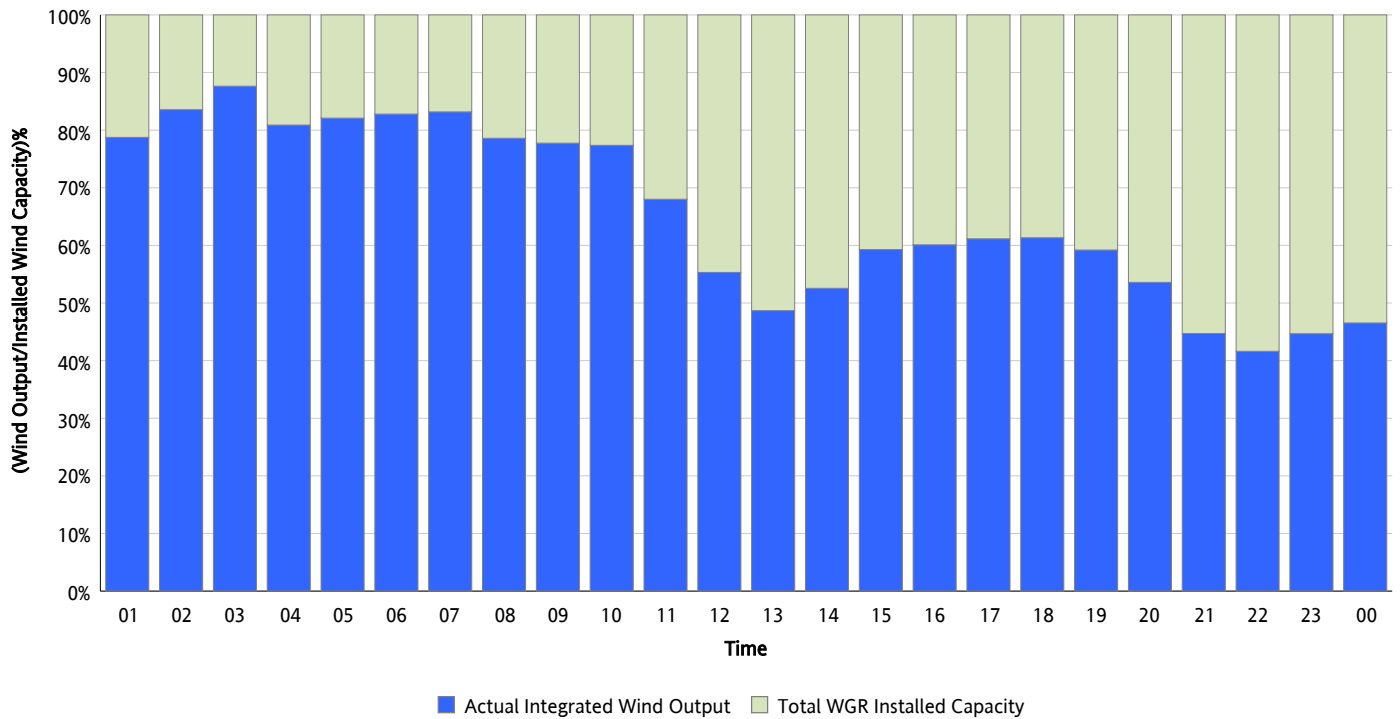
Hourly Average Actual Load vs. Actual Wind Output
04/18/2013



** Wind Record and Wind Max represent instantaneous values and the rest of the values are integrated over the hour*

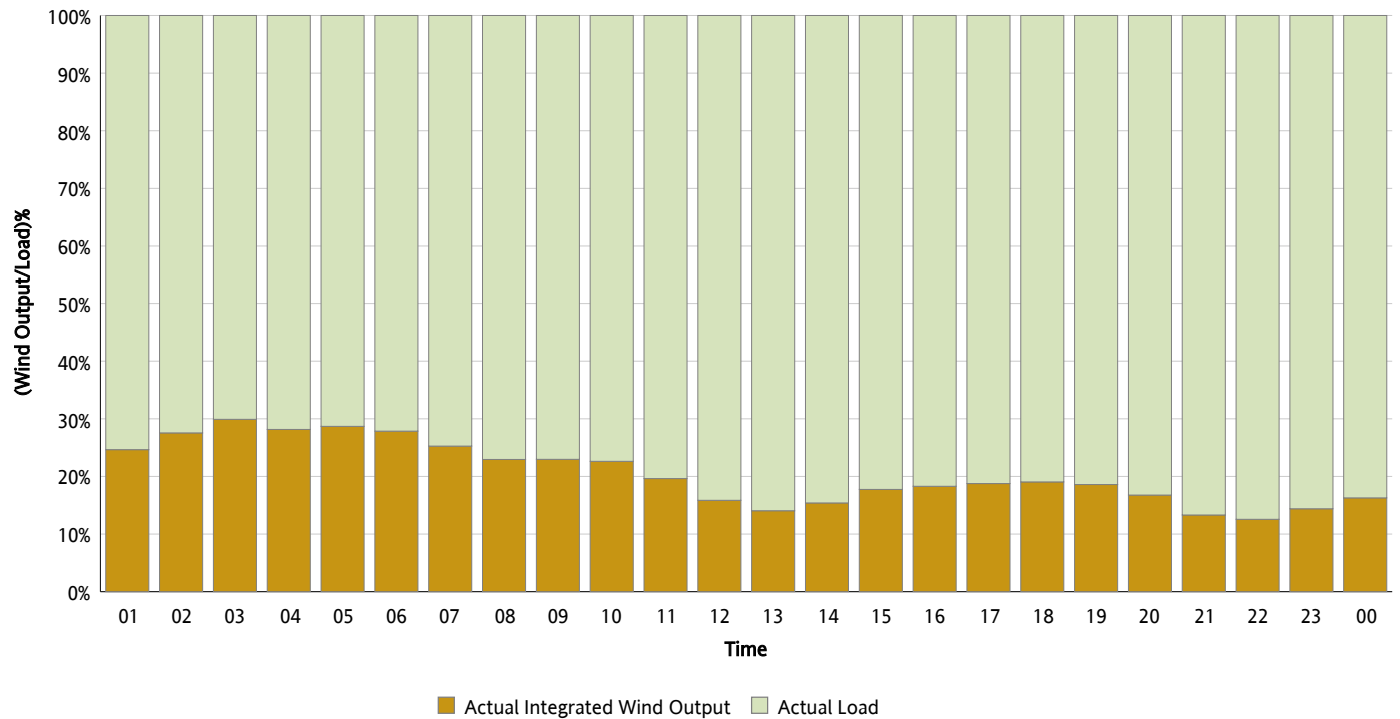
Actual Wind Output as a Percentage of the Total Installed Wind Capacity

04/18/2013



Actual Wind Output as a Percentage of the ERCOT Load

04/18/2013



ERCOT Load vs. Actual Wind Output

04/11/2013 - 04/18/2013

